

# Smithville, TX Community Profile available from:

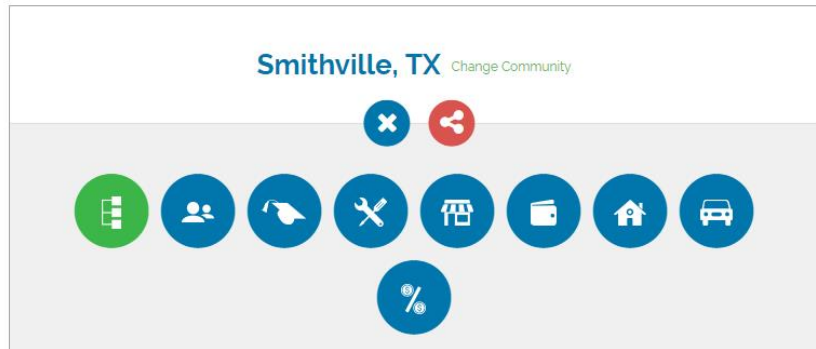
[www.texasitesearch.com/community-profile.html](http://www.texasitesearch.com/community-profile.html)



[SITES & BUILDINGS](#)
[DEMOGRAPHICS](#)
[BUSINESSES](#)
[MAPPING](#)
[COMPARE](#)
[PROFILE](#)
[CONTACT](#)

## COMMUNITY PROFILE

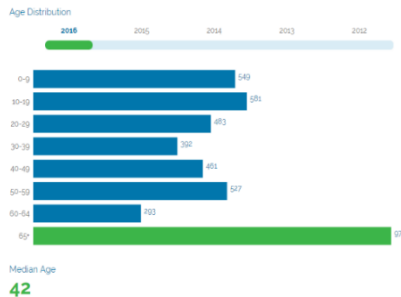
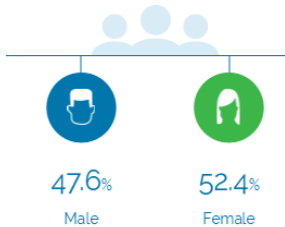
Our interactive infographic illustrates key data about Texas. Use the community profile infographic tool to explore our region.



## People

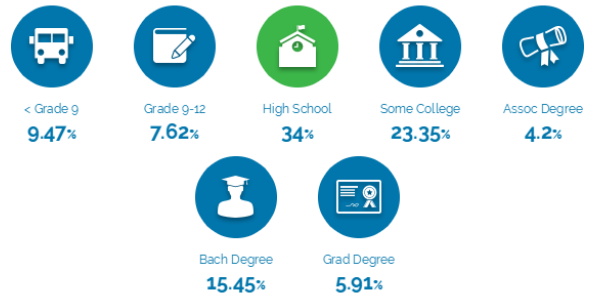
The total population of the City of Smithville is 4,162. The median age is 41.83

**4,162**  
Total Population



## Educational Attainment

The majority of the population in Smithville has a high school degree, and 25.56% have a college degree.



## Labor Force

Smithville has a labor force of 1,905 people.

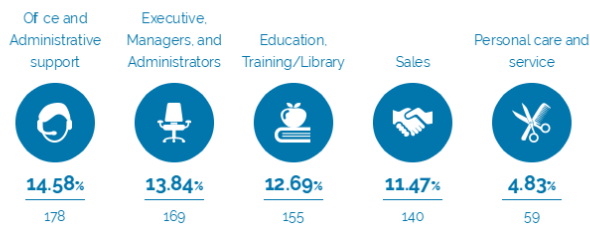
**1,905**  
Labor Force

Total Establishments  
**168**



## Talent

Where are the top jobs by occupation?



The work distribution of total employees in Smithville is:



Compiled on August 1, 2017 (JS)

# Smithville, TX Community Profile available from:

[www.texassitesearch.com/community-profile.html](http://www.texassitesearch.com/community-profile.html)



## Income and Spending

Households in Smithville earn a median yearly income of 43,433. 37.31% of the households earn more than the national average each year. Household expenditures average 49,945 per year. The majority of earnings get spent on Shelter, Transportation, Food and Beverages, Health Care, and Utilities.

**\$43,433**

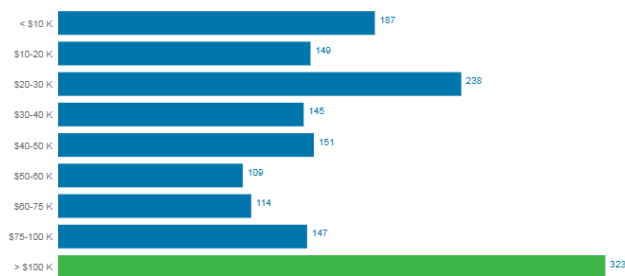
Median Household Income

**28%** less than the county

**27%** less than the state

**27%** less than the nation

Income Distribution



## Transportation

Residents spend an average of 27 minutes commuting to work. Smithville is served by 16 airports within 50 miles. Rail can be accessed within the community. Interstates can be accessed 20 miles away.



**27min**

Commute Travel Time



**1 + 16(+50 miles)**

Airports in Community



**20**

Distance to Interstate



**Freight Rail**

In Community

## Taxes

Top State Corporate Income Tax

0%

Top State Corporate Capital Gains Tax

0%

Top State Personal Income Tax

0%

Top State Personal Capital Gains Tax

0%

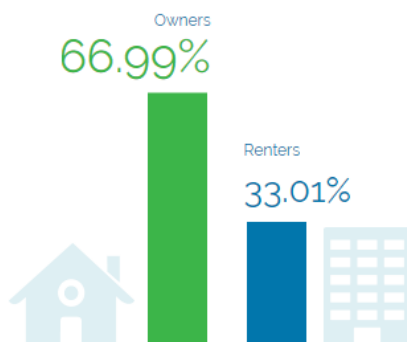
State Sales Tax

**6.25%**

## Housing

There are 103% more households who own their homes than there are renters.

Owners vs. Renters



## For more information

Log on to **Go Big in Texas:**

<https://businessintexas.com/>

**Community Profiles:**

[www.texassitesearch.com/community-profile.html](http://www.texassitesearch.com/community-profile.html)

**Demographics:**

[www.texassitesearch.com/demographics.html](http://www.texassitesearch.com/demographics.html)

Includes Consumer Expenses and Labor Force

**Industries and Businesses:**

[www.texassitesearch.com/businesses.html](http://www.texassitesearch.com/businesses.html)

Includes Clusters and Industries



Compiled on August 1, 2017 (JS)

# Smithville, TX Community Profile available from:

[www.texasitesearch.com/community-profile.html](http://www.texasitesearch.com/community-profile.html)



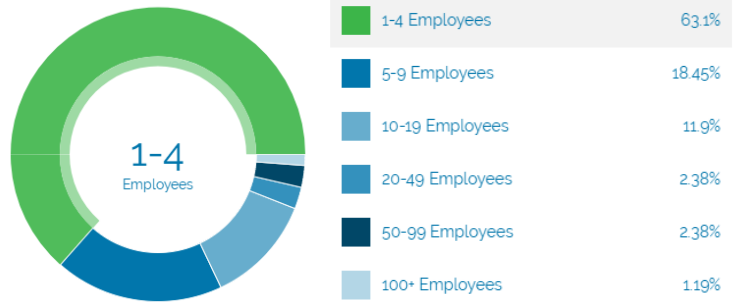
## Businesses and Jobs

Smithville has a total of 168 businesses. In 2016, the leading industries in Smithville were Health Care and Social Services, Education, Retail, and Banking, Finance and Insurance.

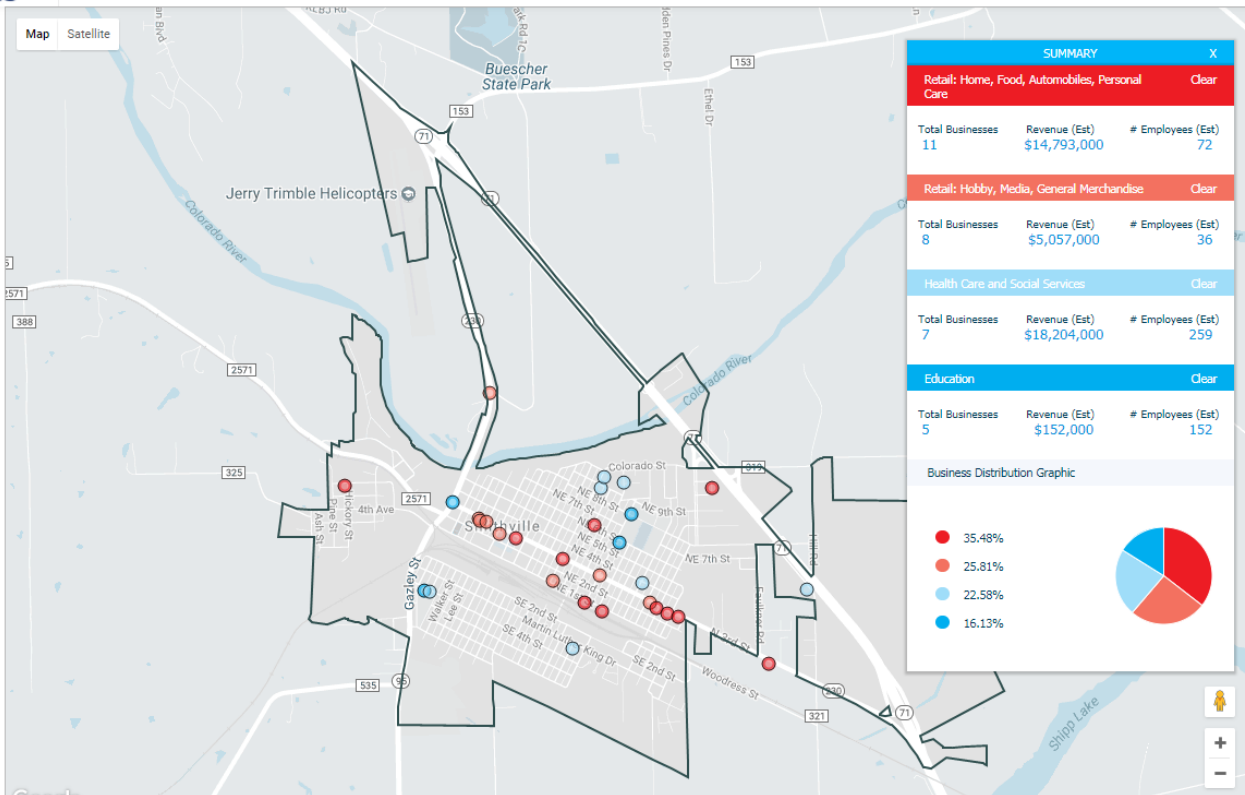
What are the top industries by jobs?



How many employees do businesses in Smithville have?



Q SITES & BUILDINGS DEMOGRAPHICS BUSINESSSES MAPPING COMPARE PROFILE CONTACT



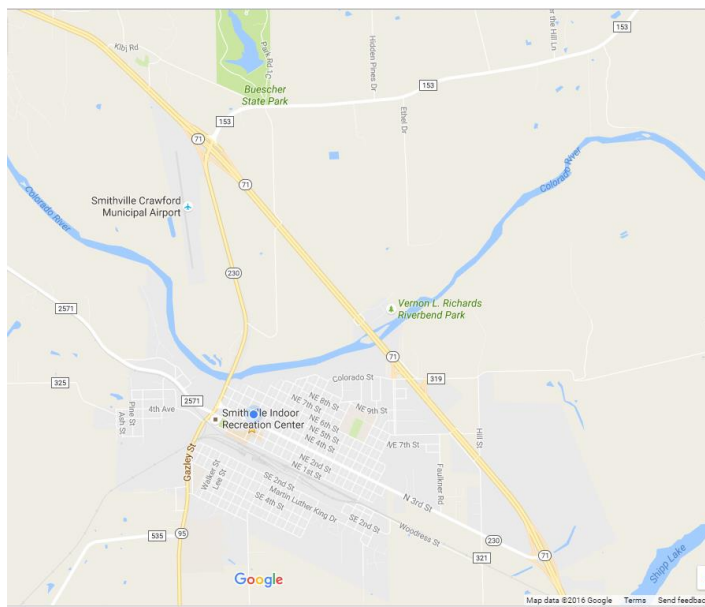
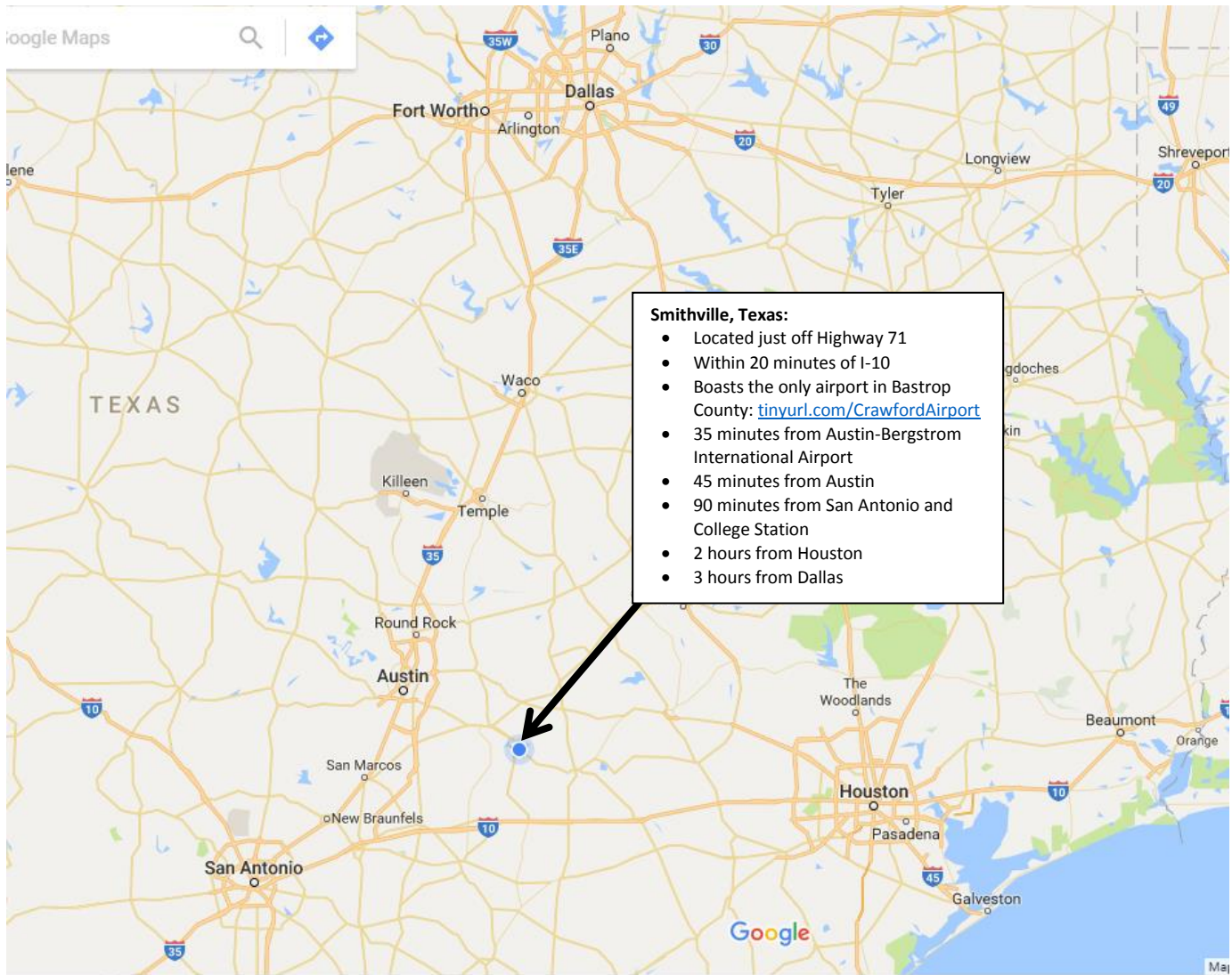
SOURCE: [www.texasitesearch.com/businesses.html](http://www.texasitesearch.com/businesses.html)



Compiled on August 1, 2017 (JS)

# Smithville, TX Community Profile available from:

[www.texasitesearch.com/community-profile.html](http://www.texasitesearch.com/community-profile.html)



## Smithville, Texas

*The Rural Capital for a Great Quality of Life*

There's always something happening in Smithville— for information on events and activities:

[www.smithvilletx.org](http://www.smithvilletx.org)

Smithville is a Designated Texas Commission on the Arts “Cultural District”:

[www.smithvilleculturaldistrict.com](http://www.smithvilleculturaldistrict.com)

Adjacent to Buescher State Park:

[tpwd.texas.gov/state-parks/buescher](http://tpwd.texas.gov/state-parks/buescher)

Medical facilities include:

- MD Anderson Cancer Research Center: [tinyurl.com/SmithvilleSciencePark](http://tinyurl.com/SmithvilleSciencePark)
- Seton Smithville Regional Hospital: [tinyurl.com/SetonSMV](http://tinyurl.com/SetonSMV)