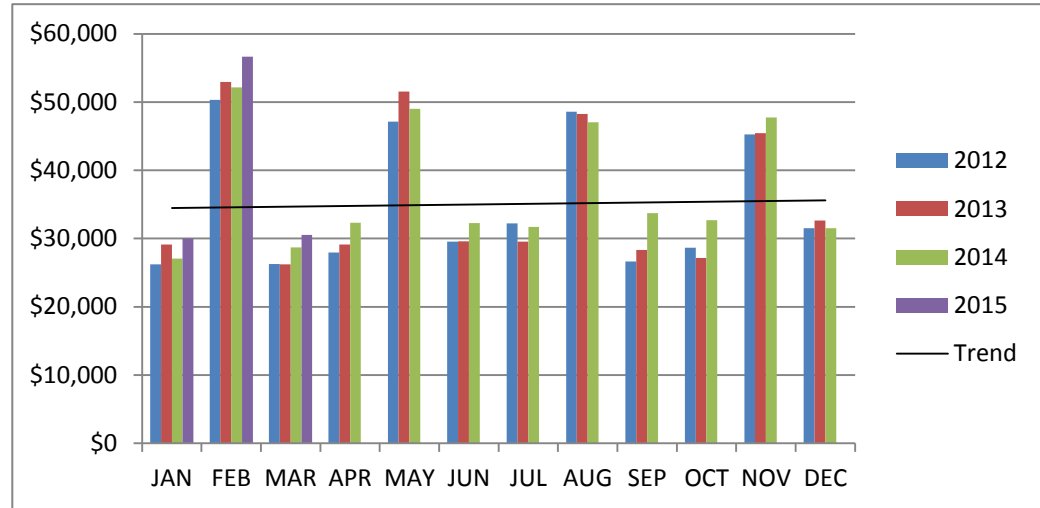
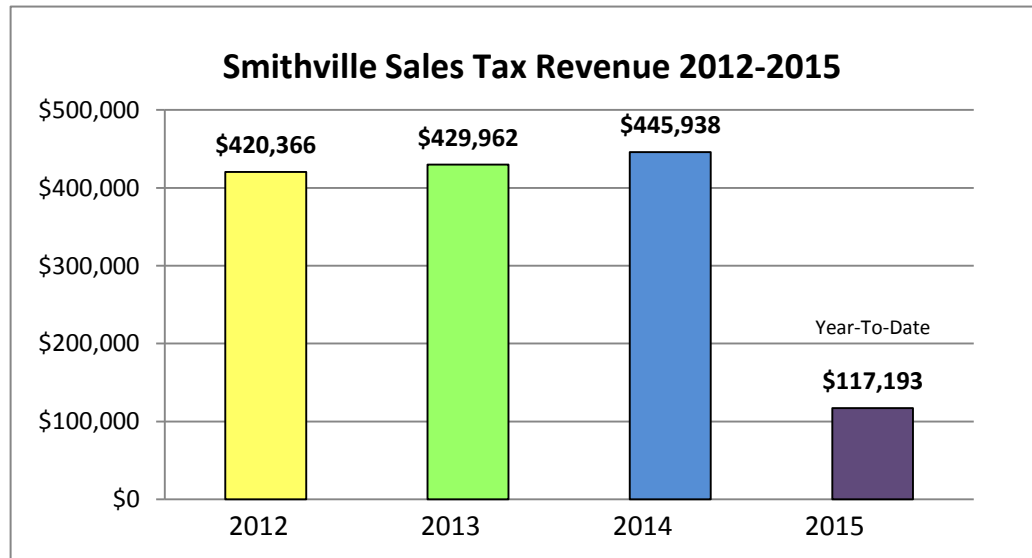


# Smithville Sales Tax Revenue (2012-2015)

	2012	2013	2014	2015
JAN	\$26,238	\$29,109	\$27,047	\$30,001
FEB	\$50,343	\$52,942	\$52,159	\$56,657
MAR	\$26,259	\$26,220	\$28,706	\$30,535
APR	\$27,967	\$29,148	\$32,314	\$0
MAY	\$47,133	\$51,522	\$48,997	\$0
JUN	\$29,535	\$29,598	\$32,290	\$0
JUL	\$32,215	\$29,537	\$31,719	\$0
AUG	\$48,589	\$48,273	\$47,060	\$0
SEP	\$26,647	\$28,356	\$33,732	\$0
OCT	\$28,650	\$27,166	\$32,686	\$0
NOV	\$45,274	\$45,448	\$47,728	\$0
DEC	\$31,517	\$32,644	\$31,500	\$0



Sales Tax	2012	2013	2014	2015
Revenue	\$420,366	\$429,962	\$445,938	\$117,193



**SHOP LOCAL**  
*It makes a difference!!!*

Data Source: <https://mycpa.cpa.state.tx.us/allocation/AllocHistResults.jsp>